

# SIGNODE®

**READ ALL SAFETY INSTRUCTIONS BEFORE OPERATING THIS SIGNODE PRODUCT**

## **OPERATION, PARTS AND SAFETY MANUAL**

*It is the customer's responsibility to have all operators and servicemen read and understand this manual.*

### GENERAL SAFETY INSTRUCTIONS

READ THESE INSTRUCTIONS CAREFULLY. FAILURE TO FOLLOW THESE INSTRUCTIONS CAN RESULT IN SEVERE PERSONAL INJURY.

#### 1. STRAP BREAKAGE HAZARD.

Improper operation of the tool or sharp corners on the load can result in strap breakage during tensioning, which could result in the following:

- A sudden loss of balance causing you to fall.
- Both tool and strap flying violently towards your face.

Failure to place the strap properly around the load or an unstable or shifted load could result in a sudden loss of strap tension during tensioning. This could result in a sudden loss of balance causing you to fall.

Read the tool's operating instructions. If the load corners are sharp use edge protectors. Place the strap correctly around a properly positioned load.

- Positioning yourself in-line with the strap, during tensioning and sealing, can result in severe personal injury from flying strap or tool. When tensioning or sealing, position yourself to one side of the strap and keep all bystanders away.
- Properly crimp or notch the seal.
- Tuck strap end back into dispenser when not in use.

#### 2. TRAINING.

This tool must not be used by persons not properly trained in its use. Be certain that you receive proper training from your employer. If you have any questions contact your Signode Representative.

#### 3. EYE INJURY HAZARD.

Failure to wear safety glasses with side shields can result in severe eye injury or blindness. Always wear safety glasses with side shields which conform to ANSI Std. Z87.1 or EN 166.



#### 4. FALL HAZARD.

Maintaining improper footing and/or balance when operating the tool can cause you to fall. Do not use the tool when you are in an awkward position.

#### 5. CUT HAZARD.

Handling strap or sharp parts could result in cut hands or fingers. Wear protective gloves.



#### 6. TOOL CARE.

Take good care of the tool. Inspect and clean it daily, lubricate it weekly and adjust when necessary. Replace any worn or broken parts.

#### 7. WORK AREA.

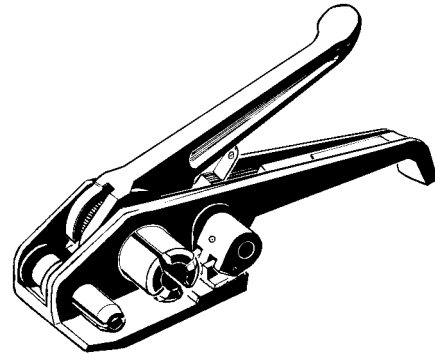
Keep work areas uncluttered and well lighted.

#### 8. CUTTING TENSIONED STRAP

Using claw hammers, crowbars, chisels, axes or similar tools can cause tensioned strap to fly apart with hazardous force. Use only cutters designed for cutting strap. Read the instructions in the cutter's manual for proper procedure in cutting strap. Before using any Signode product read its Operation and Safety Manual.

### WHD TENSIONER

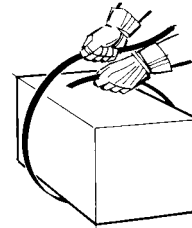
For plastic strap up to 3/4" (19mm) x .044" (1.11mm).  
Part No. 257400



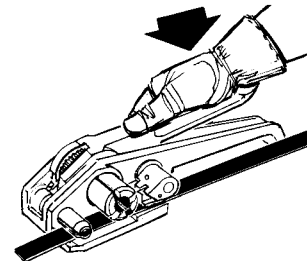
Use the correct Signode products for your application. If you need help contact your Signode Representative.

### OPERATING INSTRUCTIONS

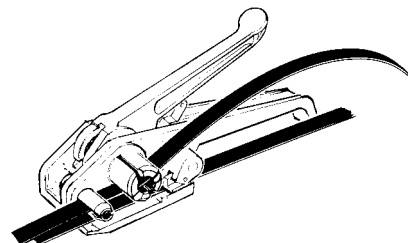
1. Circle the package with strap as shown.



2. Hold the tensioner in your right hand and press the tension lever against the housing assembly. Place the lower strap beneath the gripper and inward until it touches the side of the housing. The strap end must protrude 2" (50mm) beyond the front of the tool. Release the tension lever.

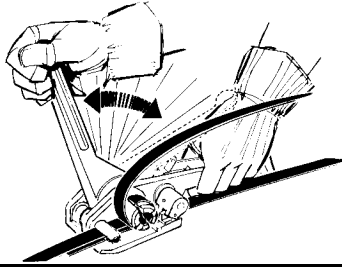


3. Fully insert the upper strap into the slot of the cutter mechanism and the windlass.



## OPERATING INSTRUCTIONS, Continued

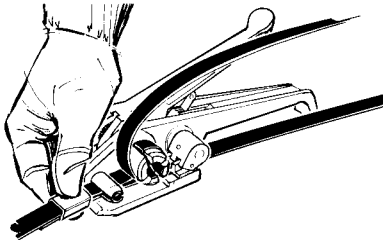
4. Hold the tool with your left hand and with the right hand, move the tension lever back and forth until the desired tension level has been applied.



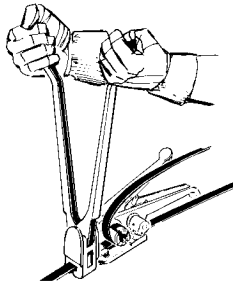
### **WARNING**

Do not force the tension lever down against the release lever assembly as this will release the lower strap and result in a sudden loss of tension.

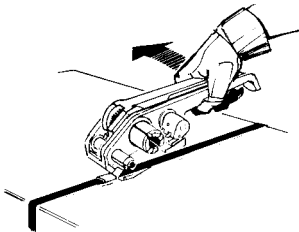
5. Place the seal over the straps and slide it towards the tool.



6. Fully open the sealer and place it directly on top of the seal. Press the sealer levers together to crimp the seal.



7. Remove sealer. Completely close the tension lever against the housing assembly. This action will sever the strap and release the gripper. Pivot the tensioner away from the strap.



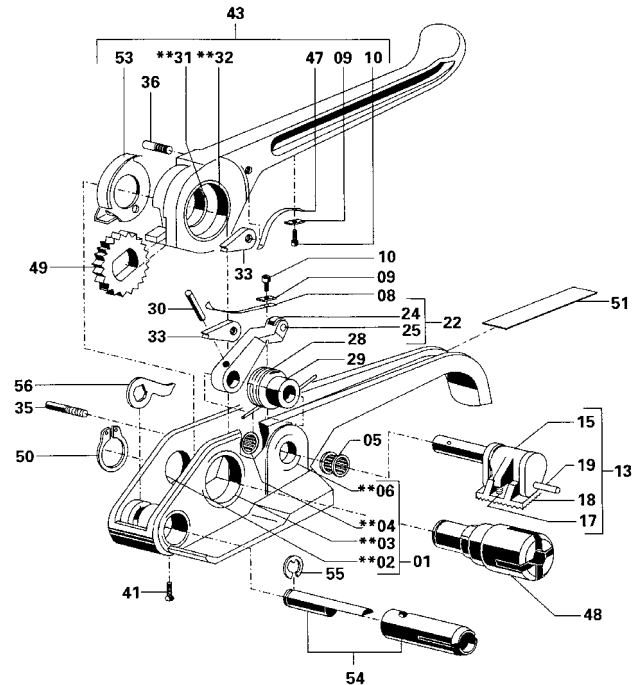
## MAINTENANCE

- Periodically lubricate all moving parts with one or two drops of light machine oil.
- Clean the gripper of any dirt or strap residue, daily.
- Inspect the tool for any worn and/or damaged parts.

## PARTS LIST

KEY	QTY	PART #	DESCRIPTION
1	1	257402	Housing assembly (Key: 1,2,3,4,6,7)
2	1	257403	Bushing, R
3	1	257404	Bushing, LH
4	1	257405	Needle bearing, RH
5	1	257406	Needle bearing, LH
6	1	257407	Bushing, LH
8	1	257409	Ratchet spring (housing)
9	2	257410	Washer plate
10	2	257411	Cylinder head screw
13	1	257412	Clamp assembly (Key: 15,17,18,19)
15	1	257414	Clamp arm-shaft
17	1	257416	Clamp plate spring
18	1	257417	Clamp plate
19	1	257418	Shank screw
22	1	257419	Release lever assembly (Key: 24,25)
24	1	257421	Roller
25	1	257422	Rivet
28	1	257423	Clamp spring
29	1	257424	Spacer
30	1	257425	Spiral pin
31	1	260153	Bushing, RH
32	1	260154	Bushing, LH
33	2	260144	Ratchet pawl
35	1	260146	Shank screw
36	1	260147	Shank screw
41	1	260150	Counter sunk screw
43	1	260152	Lever assy. (Key: 9,10,31,32,36,47,53)
47	1	260156	Spring top (handle)
48	1	260157	Windlass
49	1	260158	Ratchet wheel
50	1	260159	Retaining ring
51	1	260137	Safety sign
53	1	260155	Knife actuator
54	1	260149	Knife assembly
55	1	423298	Retaining ring
56	1	260148	Knife lever

\*\* Use Loctite #242.



### **WARNING**

Inspect all parts daily and replace them if they are worn or broken. Failure to do this can affect a product's operation and could result in serious personal injury.