

MODEL SA11-D6 / SA11-D10 SEALERS

FOR REGULAR AND HIGH-TENSILE STEEL STRAPPING

Features

- Hardened tool steel parts for long wear
- Double up-notch seal for high joint efficiency
- Compatible with feed wheel type tensioners
- Easy replacement of wearing parts
- Ideal for regular shaped packages
- Available for $\frac{3}{4}$ " and $1\frac{1}{4}$ " strapping
- Samuel quality built in to every unit



MODEL SA11-D6 / SA11-D10 Sealers

FOR REGULAR AND HIGH-TENSILE STEEL STRAPPING

Description

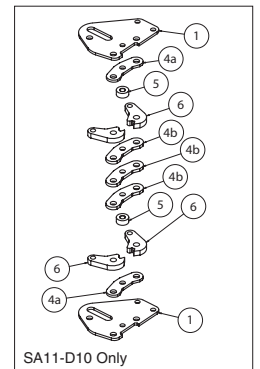
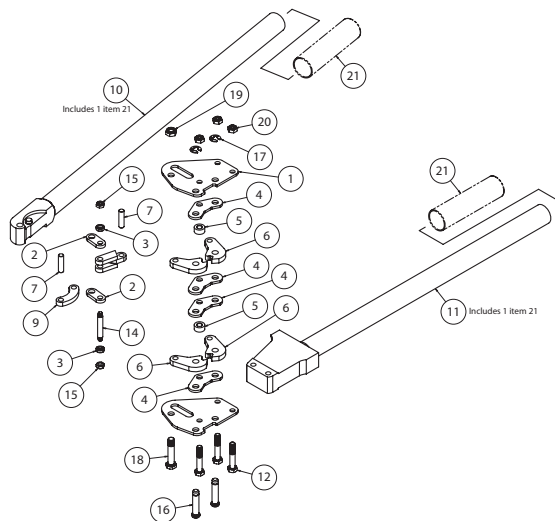
Samuel SA11 sealers have been designed for a broad range of common strapping applications. These sturdy sealers are built with hardened tool steel, to provide you with a lifetime of reliable use under demanding conditions. The SA11 is available in two models which can handle standard and high tensile strapping in gauges of 3/4" and 1 1/4". Used in combination with a standard feedwheel type tensioner, the SA Series sealer is designed to crimp an open flange seal in a double up-notch configuration.

Parts

Item	Qty	SA11-D6 Part #	SA11-D10 Part #	Description
1	2	C19343F	C19337F	Side plate
2	2	D42127A	D43047F	Top link
3	2	D41607F	D41607F	Roller
4	4	D42123F	-	Punch
4a	2	-	D46427F	Punch, outside
4b	3	-	D41601F	Punch, center
5	2	D42128F	D46437F	Spacer
6	4	C20166F	C20479F	Jaw
7	2	D43797F	D42118F	Pivot pin
8	1	D42126F	D46452F	Rear link
9	1	D42125F	D43048F	Front link
10	1	B12361A	B12509A	Upper handle assembly
11	1	B12624A	B12623A	Lower handle assembly
12	3	D31231F	-	Screw, .312-24 x 1.75 Hex Hd
12b	3	-	D67411F	Screw, .312-24 x 2.25 Hex Hd
14	1	D43796F	D73865F	Stud
15	2	D42072F	D42072F	Nut, .250-28 elastic stop
16	2	HT321A (ISP)	HT321 (ISP)	Jaw pivot pin
17	2	CB836 (ISP)	CB836 (ISP)	Retaining E-ring
18	1	D43798F	D42117F	Handle pivot bolt
19	1	D43801F	D43801F	Nut, .375-24 thin elastic stop
20	3	HT324 (ISP)	D43123F	Nut, .312-24 elastic stop
21	2	HT305A (ISP)	HT305A (ISP)	Handle grip



Represented By:



SA11-D6/D10-02/11-94950